

Lotsia® PDM PLUS

the universal integrated PDM/TDM/Workflow solution



An Enterprise-Level integrated PDM/TDM/Workflow solution Lotsia PDM PLUS brings Product Lifecycle Management Concept to real life.

Lotsia PDM PLUS meets every-day needs of a product lifecycle support with an easy-to-use interface and simple customization to reflect fast changing challenges of the World Economy Globalization.

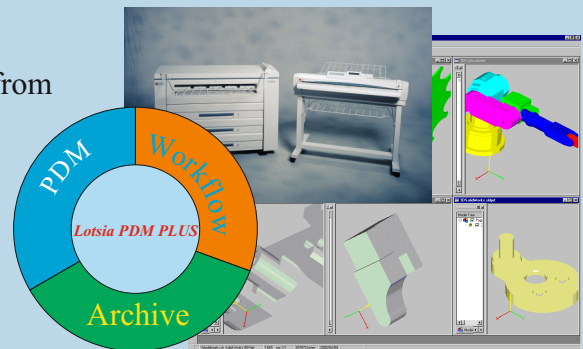
Lotsia PDM PLUS includes Protected Document Vault, powerful PDM subsystem and flexible Workflow Subsystem. Lotsia PDM PLUS is targeted at concurrent engineering, production and maintenance of complex technical systems.

Lotsia PDM PLUS has been developed in accordance with the international standard requirements, such as ISO 9000, ISO 10007 and ISO 10303 (STEP), PLM XML.

Lotsia PDM PLUS has been successfully implemented in above 1000 companies representing 30 industries¹ including Mechanical Engineering, A/E/C companies, Aerospace&Defence, Oil&Gas, Shipbuilding, Industrial Plants, Power Industries etc.

Lotsia PDM PLUS usage benefits

- **Minimizes “time-to-profit”** in product life-cycle from idea to market
- **Decreases design errors** due to one-time and one-point data load
- **Gives significant cost savings** due to more rapid information exchange with Workflow software
- **Increases work productivity** via human working procedures automation
- **Increases revenue** as a result of better product production in a shorter time with minimized costs
- **Real-time project control and analytics**
- **Powerful query capabilities, easy-to-use interface.**

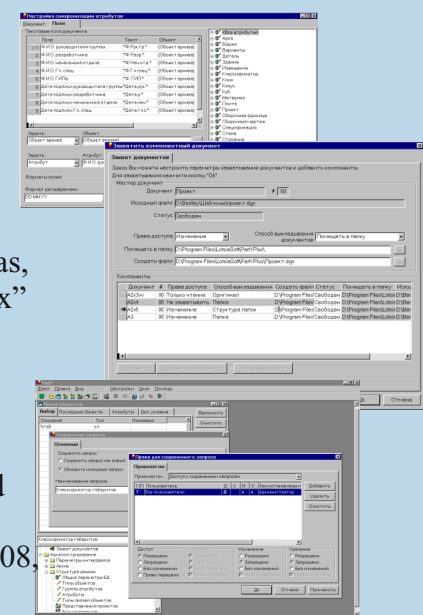


Why Lotsia PDM PLUS

- The best Product Data & Engineering Data management solution on the Russian and CIS software market (“CAD Elite’2002 & 2003” Awards)
- Twelve years in “client/server” software application development, proven solutions for huge databases
- Flexibility, scalability and interoperability. Different RDBMS support (SQL Server, Sybase, Oracle, PostgreSQL), distributed database support
- Integration with the most popular CAD systems

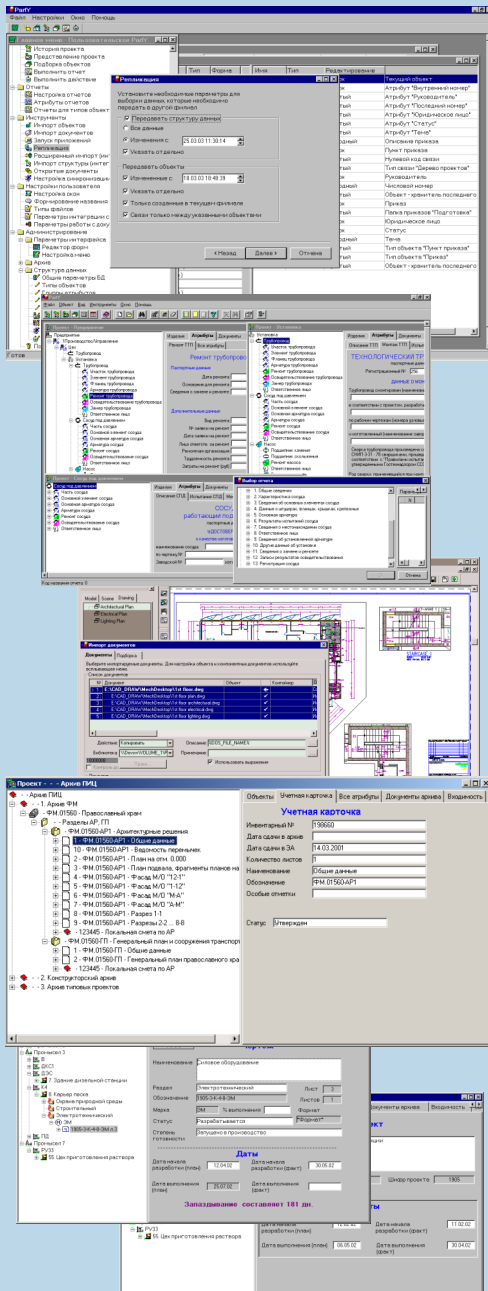
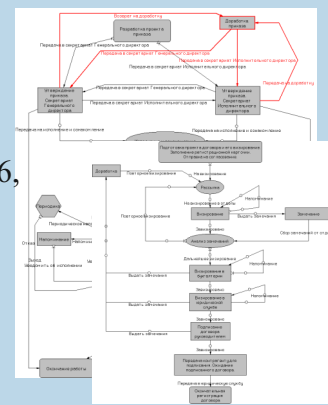
Lotsia PDM PLUS Highlights

- Suitable for Mechanical Engineering companies, A/E/C, Oil&Gas, Aerospace&Defence, Sewing Industry and others; “Out-of-the-box” solution templates
- Consolidated analytics. Report generator included
- Classification support across the Enterprise, simple administration
- Flexible data access permissions control for every document and every user across the company. Various network OS support for protected document vaults (Windows 10/8/7/Server 2016/2012/2008, Novell NetWare...)
- Business-Rules based approach



¹ As of January the 1st, 2018.

- System based on “Client/Server” Architecture, providing a high level of data protection from unauthorized access, physical and logical data integrity, and high-productivity multi-user operation
- The most widely used OS support (MS Windows 10/8/7/2012/2008/2016, Novell NetWare and Unix/Linux Servers); good interoperability, MS Active Directory Integration
- International Quality-Related and Data Exchange standard compliance (ISO 9000, ISO 10303 STEP, PLM XML)



Document Management

- Document linked to a product structure
- User-defined document attributes
- Flexible document queries; saved queries
- Lotsia PDM PLUS' document access directly from software applications
- Several applications registration opportunity for each document type, office and CAD application seamless integration
- Document Set collection for export
- Batch document scanning with TWAIN-compatible scanners and batch document printing

Workflow and Project Management

- Document Approval Automation
- ECO/ECR Management Automation
- Time-line reporting
- Start and Finish date definition
- Various project-related reports generation; MS Office documents templates for report export
- Engineering changes history
- Business-Rules editor embedded
- External e-mail software data exchange via MAPI/SMTP

Product Structure

- Configuration management with both variants and options support; ISO 10007 compliant, PLM XML support
- Additional variant storage in a project history
- Automated BOM generation
- Visual project tree; visual project compare
- Project Views for different user groups
- Classification
- Easy “copy-and-paste” / “drag-and-drop” item re-use
- Concurrent engineering support (XREFs, linked files, Assembly Structure synchronization etc.)

Interfaces

There are a lot of different options for Lotsia PDM PLUS:

- CAD Interfaces for: Autodesk AutoCAD, Mechanical Desktop, AutoCAD Mechanical, AutoCAD Architecture, AutoCAD MEP, AutoCAD Civil 3D, AutoCAD Electrical, Inventor; Bentley MicroStation, TriForma, PlantSpace, GeoGraphics; SolidWorks etc.
- STEP (ISO 10303) and PLM XML interfaces
- Digital Signature software support
- Web Interface - Lotsia WEB
- ODMA support offer a wide variety software applications integration
- MAPI/SMTP e-mail integration
- Replication Module
- ERP/MRP system integration

Lotsia Software:

Internet: WWW.LOTSIA.COM
E-mail: sales@lotsia.com
Phone: +7 (495) 74-804-74
Fax/Phone: +7 (495) 74-803-74